

A

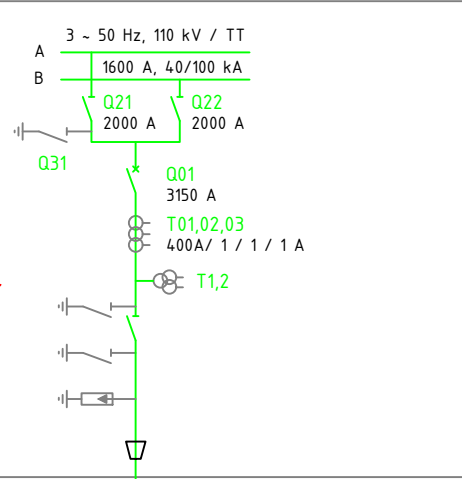
B

C

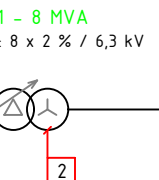
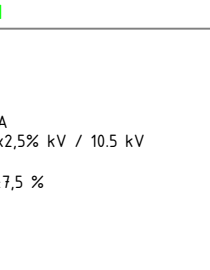
D

E

R110, doplnění pole č. 18



jednožilové VVN vodiče  
HV single core conductors

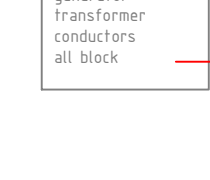
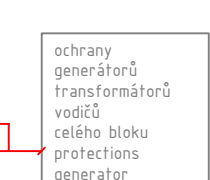
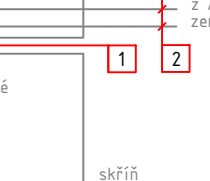
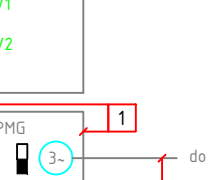


zapouzdřený systém  
ECC systém nebo  
jednožilové vodiče  
enclosed busbar  
or single core conductors

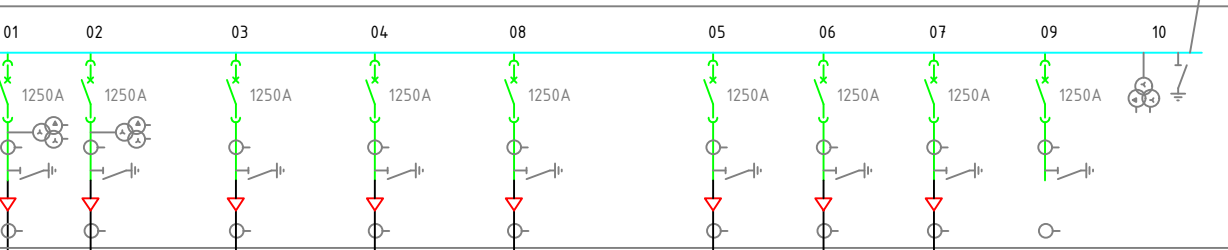
svrhu



spodem



+6RH1, 40 / 100 kA, 3 -50Hz, 6kV / IT  
skříňový rozváděč pro kotel HRSG a plynovou turbínu GT



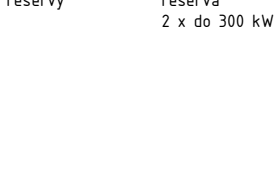
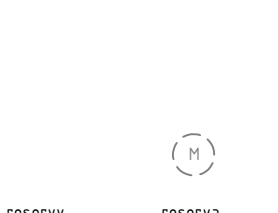
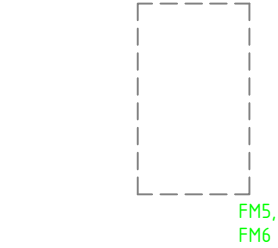
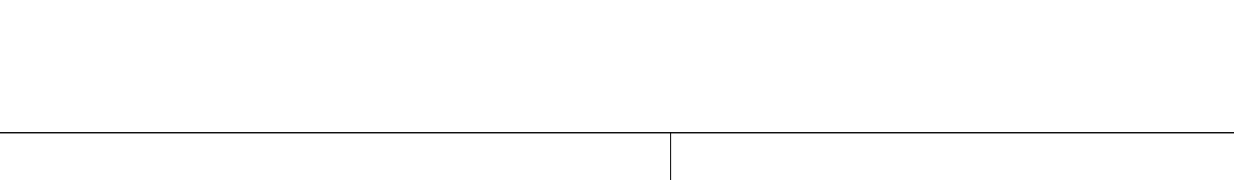
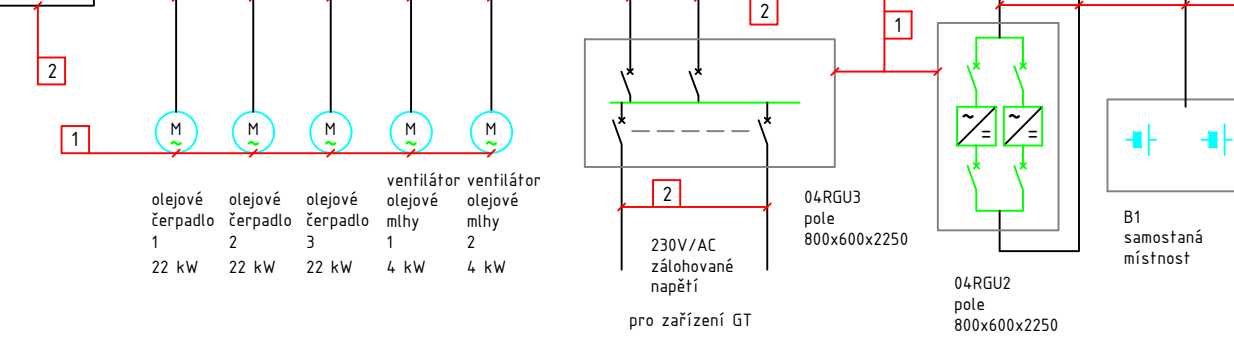
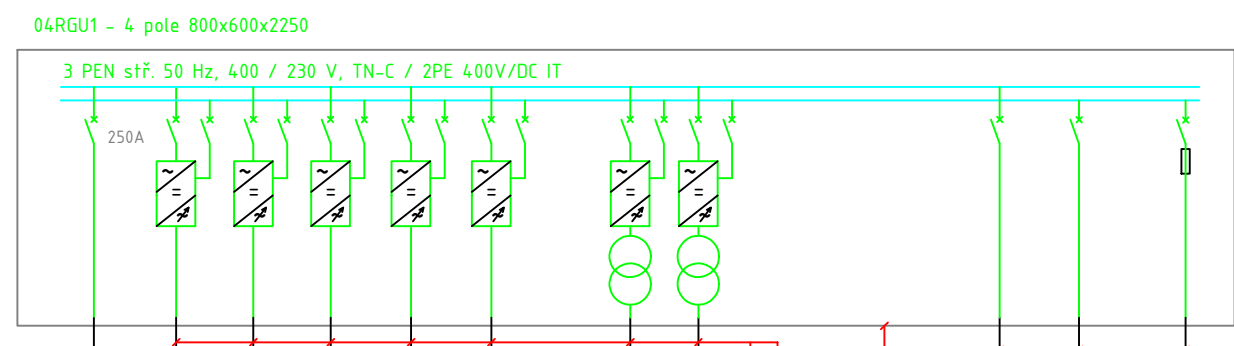
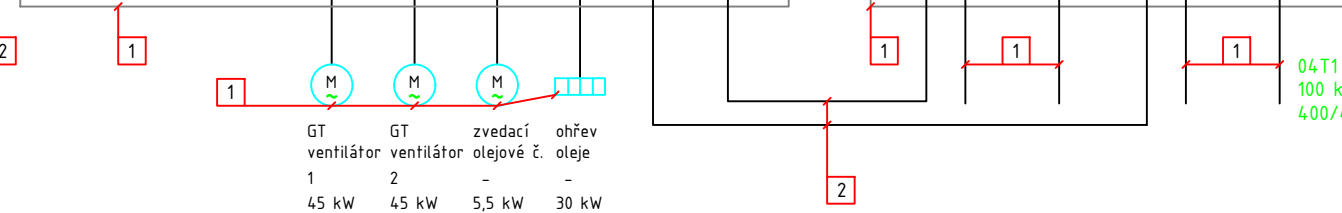
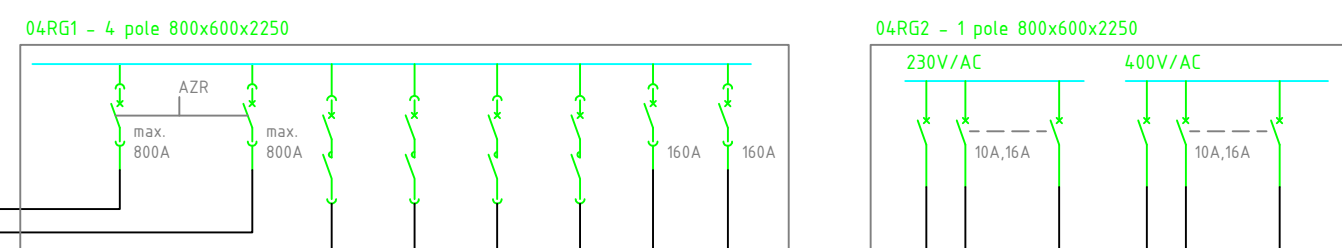
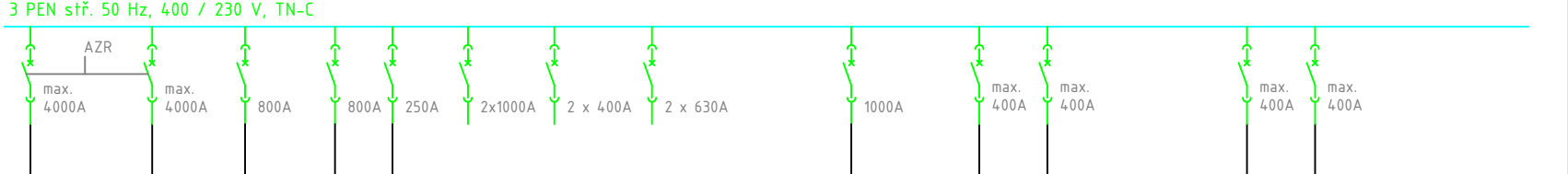
navrhované hodnoty  
(předpoklad včetně kotle)  
proposed values  
(assumption including boiler)

Sn = max. 8 MVA  
Un = 7.2 kV, In = 1250 A  
Icw (3s) / idyn  
40 kA / 100 kA

2 není součástí dodávky GT  
not included in the GT delivery

1 je součástí dodávky GT  
included in the GT delivery

+04RH1 - xxx pole 800x600x2250



\*\* Zdroj UPS složen ze dvou paralelně pracujících jednotek zatížených na maximálně 40 % jejich jmenovitého výkonu.  
I při poruše jedné z UPS bude druhá zařízena na maximální jmenovitý výkon 80 %  
The UPS consists of two units operating in parallel, loaded to a maximum of 40% of their rated power.  
In case of one of the UPS failure, the other will be loaded to the maximum rated power of 80%.

Elektrik Inženýr

Paralelní

Stavba

| Rev. | R    | M                    | D | Popis | Status | Zpracoval | Kontrola | Revizor | Ověřil |
|------|------|----------------------|---|-------|--------|-----------|----------|---------|--------|
| -    | -    | -                    | - | -     | -      | -         | -        | -       | -      |
| -    | -    | -                    | - | -     | -      | -         | -        | -       | -      |
| -    | -    | -                    | - | -     | -      | -         | -        | -       | -      |
| 0    | 0529 | ZADÁVACÍ DOKUMENTACE | - | HRDÝ  | KASPAR | HRUSA     | -        | -       | -      |

Projekt  
PPC KOMOŘANY

DOKUMENTACE PRO VÝBĚR DODAVATELE

JEDNPOLOVÉ SCHÉMA

TRACTEBEL

ENGE

Tractebel Engineering a.s.  
Pomernova 108  
531 54 Pardubice - ČESKÁ REPUBLIKA

Typ  
TP-G

Rev.  
1

016720 0700

0529

TP-G