

SALDATE
WELDINGS

_se non diversamente indicato le saldature devono avere le seguenti caratteristiche:
-unless otherwise stated the weldings must be as follows:

1-spessore S=0.7xT1 dove T1 ≤ T2 vedi schema "A"
1-thickness S=0.7xT1 where T1 ≤ T2 see scheme "A"

2-saldature continue ed accurate per unire:
2-the weldings must be continuous and careful in order to joint:

-profilati con profilati
-structural shapes with structural shapes

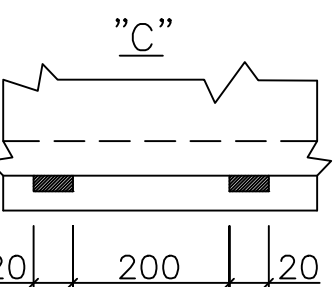
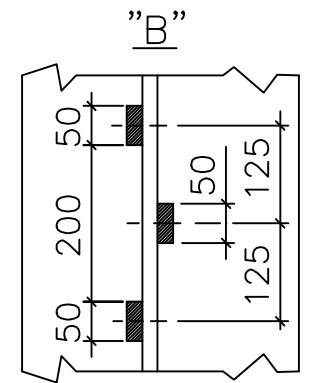
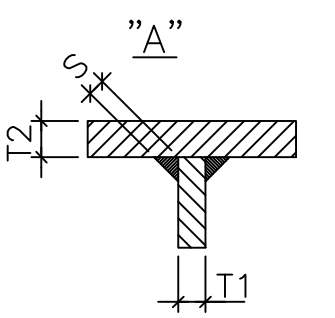
-profilati con piastre
-structural shapes with plates

-fogli di lamiera con fogli di lamiera
-sheets with sheets

3-saldature a tratti per unire:
3-the weldings must be intermittent in order to joint:

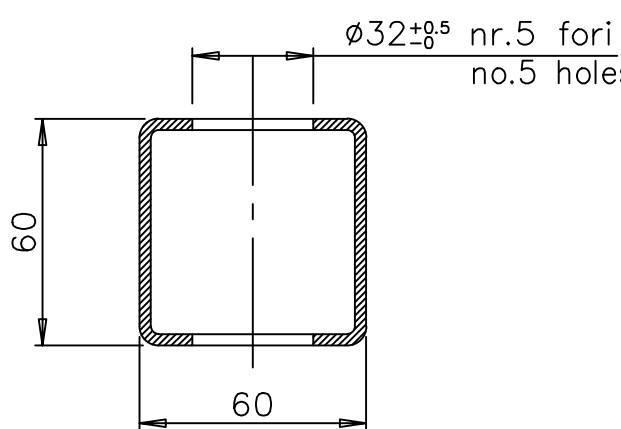
-rinforzi di irrigidimento con fogli di lamiera vedi schema "B"
-stiffening reinforcement with sheets see scheme "B"

-fogli di lamiera striata sulle travi di sostegno vedi schema "C"
-chequered plates on the supported beams see scheme "C"



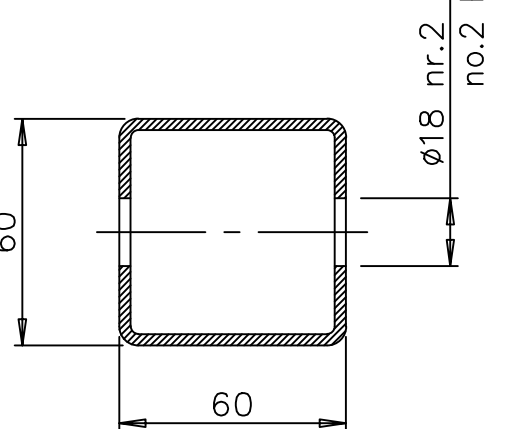
C-C

Scala 1:2
Scale



D-D

Scala 1:2
Scale



VALBEK: Doplnění

Hmotnost 1 ks: 35 kg
Celkový počet (pro 2 základy): 6 ks

DENOMIN. TITLE
MMC037 continuous modular mill frames assembling templates
ITEM: MMC037AH006

MATERIALI - MATERIALS

_se non diversamente indicato i materiali da utilizzare sono:
_unless otherwise stated the materials must be utilized are:

Tubi quadri e rettangolari Square and rectangle tubes	Fe 360 UNI 7070
--	-----------------

PROFILATI - SECTION BARS

Tipo - Type	UNI
Tubi quadri e rettangolari Square and rectangle tubes	10022

Massa totale = 35 kg
Total mass

Tutte le quote sono espresse in millimetri
All dimensions are expressed in millimeters

B	5/2012	E 3-5	ALLUNGATO QUOTE DI 10mm	R.C.	P.R.
REV.	DATA/DATE	ZONA/ZONE	REVISIONI/REVISIONS	DA/BY	VISTO/CKD
disegnato/dwn	visto/ckd	data/date	scala/scale	sostituisce il n./it replaces no.	
R.C./50	P.R.	11/2009	1:10	MMC037AH006A	
 Via Selice Provinciale 17/A-IMOLA			IMPIANTO PLANT		
DENDMIN. TITLE			MMC037 - DIMA DI MONTAGGIO TELAI		
			DI FONDAZIONE		
			MARCA: MMC037AH006		
Proprietà' riservata. Riproduzione vietata. La Ditta tutela i propri diritti sui disegni a termini di legge. All rights reserved - Drawings cannot be reproduced in any way failure to do so will entitle Sacmi to take legal action.			DIS. N. DWG No.		
			REV. FOLIO SHEET		
			MMC037AH006, B		