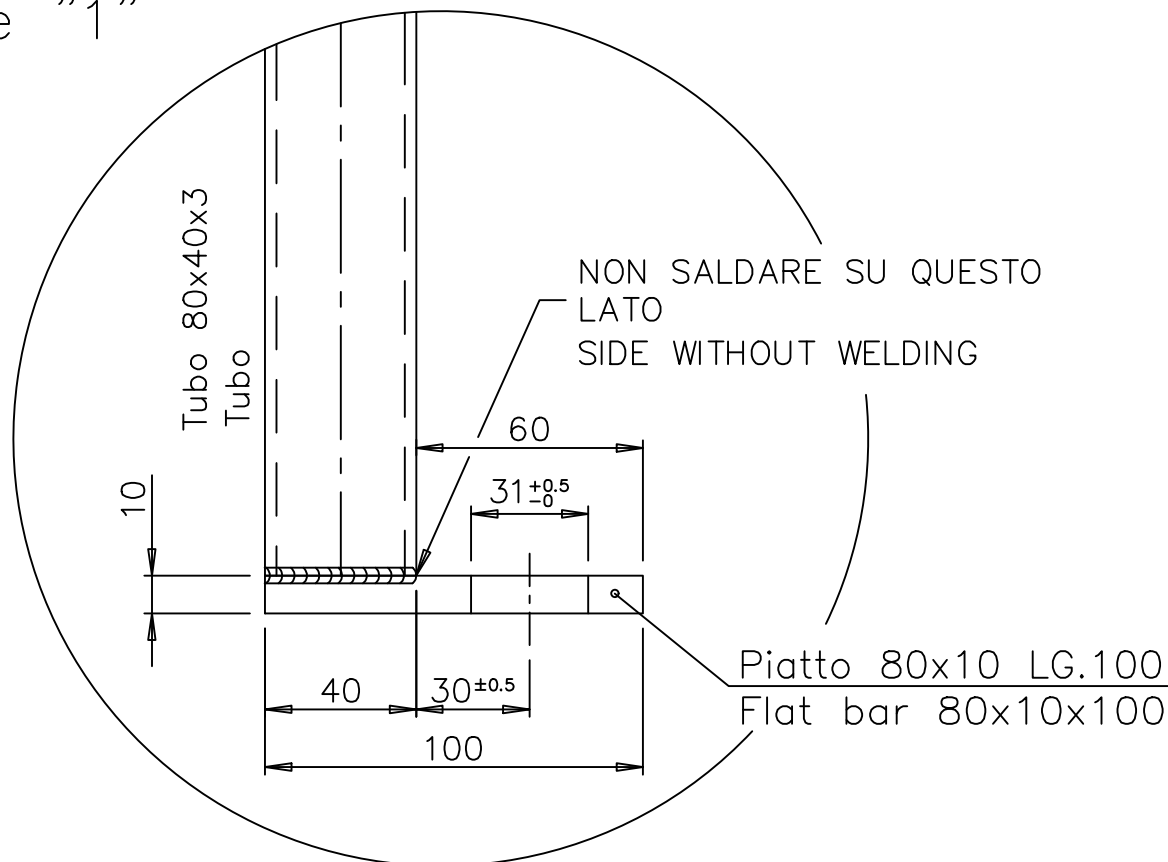
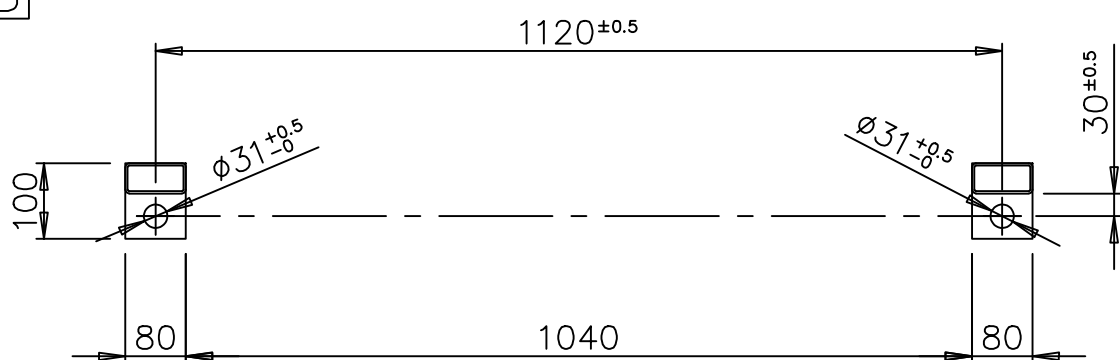


Particolare "1"
Detail

Scala 1:2
Scale



B-B



MATERIALI - MATERIALS

_se non diversamente indicato
i materiali da utilizzare sono:
_unless otherwise stated the
materials must be utilized are:

Tubi quadri e rettangolari
-piatti
Square and rectangle tubes
-flat bars

Fe 360
UNI 7070

PROFILATI - SECTION BARS

Tipo - Type

UNI

Tubo quadro e rettangolare
Square and rectangle tube

10022

Piatto
Flat bar

EU58

SALDATURE
WELDINGS

_se non diversamente indicato le saldature
devono avere le seguenti caratteristiche:
-unless otherwise stated the weldings must be as follows:

1-spessore $S=0.7 \times T1$ dove $T1 \leq T2$ vedi schema "A"
1-thickness $S=0.7 \times T1$ where $T1 \leq T2$ see scheme "A"

2-saldature continue ed accurate per unire:
2-the weldings must be continuos and careful in order to joint:

-profilati con profilati
-structural shapes with structural shapes

-profilati con piastre
-structural shapes with plates

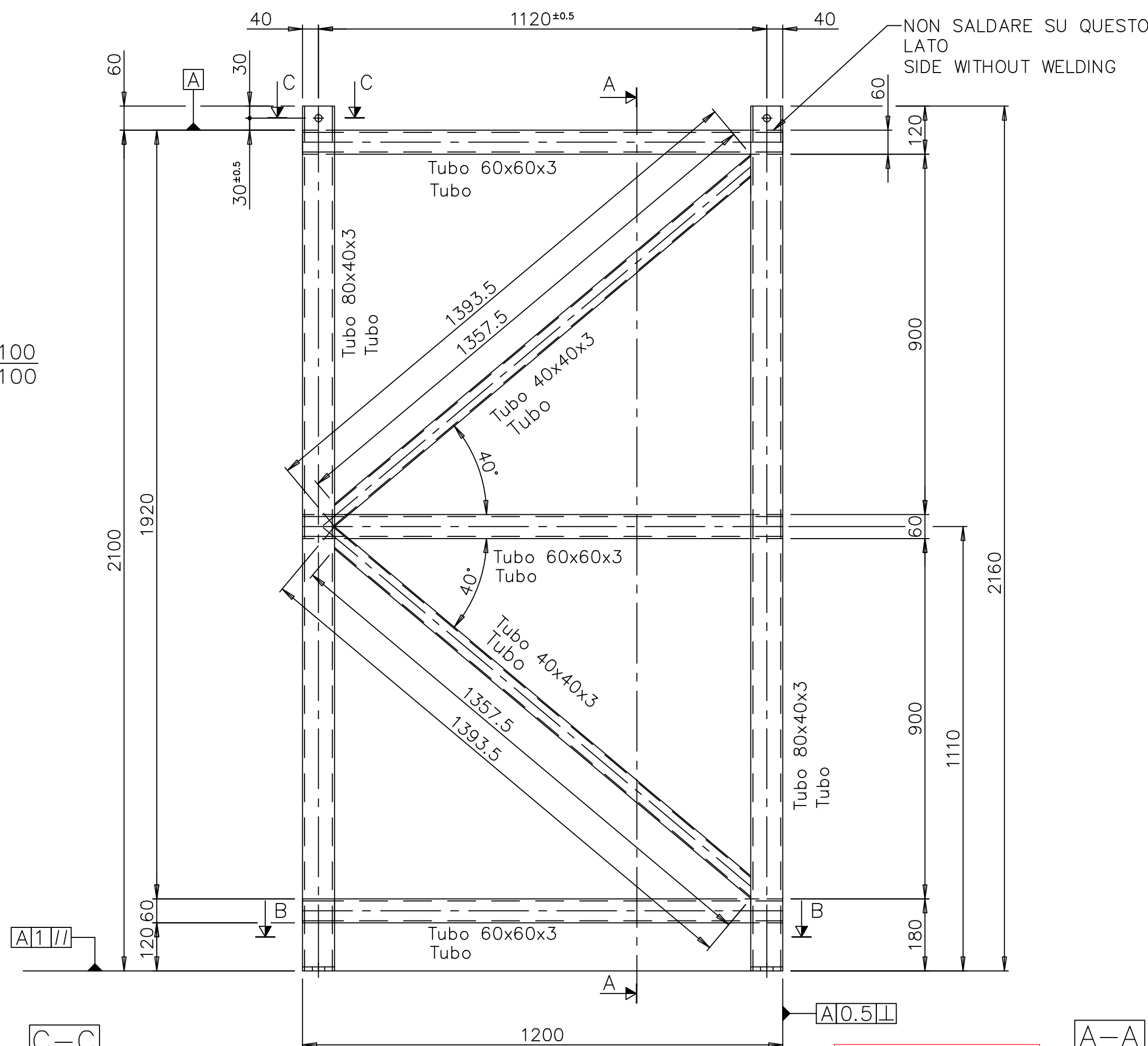
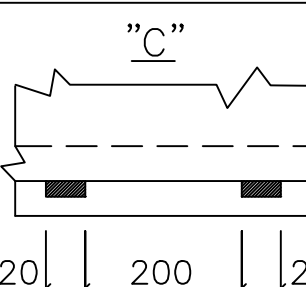
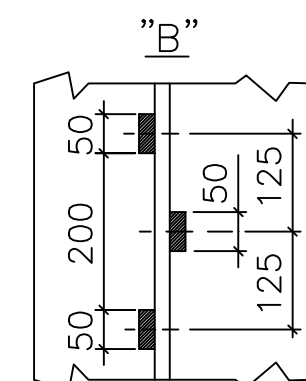
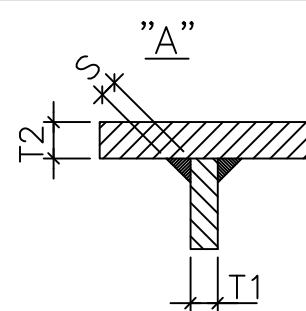
-fogli di lamiera con fogli di lamiera
-sheets with sheets

3-saldature a tratti per unire:

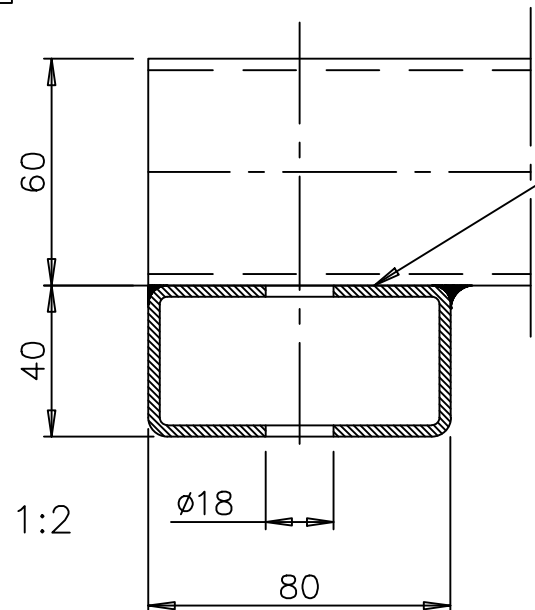
3-the weldings must be intermittent in order to joint:

-rinforzi di irrigidimento con fogli di lamiera vedi schema "B"
-stiffening reinforcement with sheets see scheme "B"

-fogli di lamiera striata sulle travi di sostegno vedi schema "C"
-chequered plates on the supported beams see scheme "C"



C-C



Scala 1:2
Scale

Massa totale = 55 kg
Total mass

Tutte le quote sono espresse in millimetri
All dimensions are expressed in millimeters

Imballare con cura per prevenire deformazioni nel trasporto
Pack carefully to prevent deformation in the transport

VALBEK: Doplnění


Hmotnost 1 ks:

55 kg

Celkový počet (pro 2 základy): 6 ks

A-A

DENOMIN.
TITLE
MMC037 continuous modular mill
frames assembling templates
ITEM: MMC037AH002

REV.	DATE	ZONE	REVISIONS			BY	CKD
disegnato/dwn	visto/ckd	data/date	scala/scale	sostituisce il n.		sostituito dal n.	
R.C./50	P.R.	09/2006	1:10				
 SACMI Via Selice Provinciale 17/A - IMOLA			IMPIANTO PLANT				
			DENOMIN. TITLE				
			MMC037 - DIMA DI MONTAGGIO TELAI DI FONDAZIONE MARCA: MMC037AH002				
Proprietà' riservata. Riproduzione vietata. La ditta tutela i propri diritti sui disegni a termine di legge			DIS. N. DWG No.		REV.	FOGLIO SHEET	DI OF
			M,M,C,0,3,7,A,H,0,0,2, A				

0 10 20 30 40 50 60 70 80 90 100 mm

UNI 936 A2